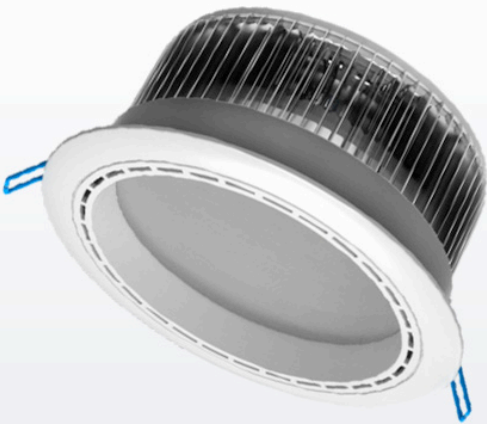


HIGH POWER LED DOWNLIGHT



Designed to replace traditional single and twin PL recessed fittings, Tryka has launched its super-bright 30W, 40W and 50W LED down lights to offer a higher output, high brightness solution for applications with greater ceiling heights and larger areas requiring higher light levels.

Using Samsung SMD LED technology and a high-grade diffusion facia, the result is a homogeneous light output.

The units maintain a high CRI of >83 and over 70lm per circuit watt. The use of remote power supplies ensures a low running temperature and outstanding long-term performance, along with ease of future maintenance.

Colours Available Luminosity

Cool White	30w: 1038lx @ 1m / 116lx @ 3m
Neutral White	40w: 1384lx @ 1m / 155lx @ 3m
Warm White	50w: 1730lx @ 1m / 193lx @ 3m

Specification

Driver Input Voltage:	110-240V AC
Max operating temperature:	+70°C
Operating ambient temperature:	-25° to +65°C
Lamp life @ 50°C:	50,000 hours
IP Rating:	IP54

Product Code	Dimensions (mm)	Power Consumption (W)	Weight	Warm White -WW	Neutral White -NW	Cool White -CW
				2700k-3500k	4000k-4500k	6000k-6500k
TRY-D240-30W-YYY	D240 x 106mm	33W	2.1kg	2350 lm	3150 lm	3950 lm
TRY-D240-40W-YYY	D240 x 106mm	43W	2.4kg	2400 lm	3200 lm	4000 lm
TRY-D240-50W-YYY	D240 x 106mm	55W	2.7kg	2540 lm	3250 lm	4050 lm

Please replace YY with Colour Code, and also add your required CCT to the end of the code if necessary.

As part of our continuous product development we reserve the right to amend these specifications without prior notice.